





# ATLAS

SINCE 1919

 116,845 - 125,663 lbs

 295 HP

 59' 5" - 71' 10"

## FAST. RELIABLE. VERSATILE.



# MATERIAL HANDLING MACHINE 520MH

[WWW.ATLASGMBH.COM](http://WWW.ATLASGMBH.COM)

# TECHNICAL SPECIFICATION 520MH

## Technical Specification

### ENGINE

Power according to ISO 9249.....	295 HP	Cylinder capacity .....	476 in <sup>3</sup>	Air filter .....	Dry air filter
RPM .....	1800 rpm	Number of cylinders.....	6	Battery .....	2x 12V / 143 Ah
Make/Model.....	Deutz / TCD 7.8 L6 EU Stage V	Borehole/lift.....	110/136	Alternator .....	28.5 V / 100 A
Design.....	Turbocharger/ intercooler	Cooling system.....	Water-cooled	Starter.....	24V / 4.0 kW

### HYDRAULIC SYSTEM

• AWE 5 system (load sensing)	• Suction valves for all work functions	• Overload warning device
• 2 Load limit controlled high-performance piston pumps	• Load-retaining and fine-drop valve in lifting circuit	
• Fuel efficient flow-on-demand control	• Pipe break protection valves for lifting cylinders	• Max. oil flow .....
• Sensitive, proportional, independent control	• Grab and grab-rotating function	2 x 100 gpm
• Primary and secondary protection against overload	• 2 additional circuits for additional consumer loads possible	• Max. operating pressure.....
		5,221 PSI
		• Operating modes: 3 pre-programmed modes (Fine, Eco, Power)

### SWING ASSEMBLY

• Swing motor	2 x Axial piston motor with priority valve	• Max. swing speed.....
• Swing gear:	Planetary transmission	5.2 rpm
• Swing brake:	Automatic multidisc brake	• Swing torque .....
		120 960 lbf ft

### TRACTION DRIVE AND BRAKES

• Variable displacement motor	• Automotive drive and cruise control	• Dual circuit brake system .....
• 2-gear transmission	• Maximum speed .....	drum brake
• Double-acting brake valve	9.9 mph	• Parking brake .....
• Driving direction pre-selection via switch in joystick	• Terrain speed.....	spring-loaded brake
	3.1 mph	
	• Crawling speed .....	
	0.6 mph	

### UNDERCARRIAGE

• 154 324 lbs special excavator axles	• Steering axle with automatic oscillating axle locking	• 8 tyres Solid rubber tyres.....
		12.00 - 24

### FILL CAPACITIES

• Fuel tank.....	243 gal	• Engine oil.....	5.5 gal	• Hydraulics system .....	370 gal
• Cooling system .....	14 gal	• Hydraulic tank .....	190 gal	• Ad Blue .....	13.2 gal

### DRIVER'S CAB

• Meets latest safety standards	<b>CONTROL:</b>	<b>CLIMATE CONTROL:</b>
• Extra-wide entrance	• Ergonomic joysticks	• Air conditioning equipped as standard
• Spacious leg room	• Steering via potentiometer	• Very good air distribution through optimally arranged nozzles
• Vario cab can be driven 9' 10" high and 8' 2" forwards	• Indicators, controls and operating switches are clearly arranged	
• Excellent circumferential visibility		<b>SOUND LEVELS:</b>
• Preparation for radio installation with mute function	<b>MONITORING:</b>	• ISO 6396 (L <sub>pA</sub> ) in driver's cab .....
	• Operating data display screen	70 dB(A)
<b>DRIVER'S SEAT:</b>	• Automatic system for monitoring, warning and storage of data	• 2000/14EG (L <sub>wA</sub> ) ambience level .....
• Air-cushioned comfort seat (optional seat heating)		105 dB(A)
• Arm rests and lumbar support		
• Seat adjustable separately from console		

# WORKING EQUIPMENT 520MH

## Working Equipment

### OPERATING WEIGHTS

	LOADING BOOM 32' 2" (C94.5i)	LOADING BOOM 39' 8" (C94.6i) / (C94.16iD)
	Stick 24' 7" (D94.15i)	Stick 30' 4" (D94.16i)
4 outriggers	116,845 lbs	119,050 lbs
3' 3" pylon	121,254 lbs	123,459 lbs
6' 7" pylon	123,459 lbs	125,664 lbs

Operating weight with driver, solid rubber tyres, completely filled implement and 3 307 lbs for attachments

### EQUIPMENT

#### BASIC DEVICE ATLAS 520MH

- Material Handler 520MH with quadruple outriggers and 2 lifting cylinders (A 94.32)

#### Hydraulics:

- Grab and grab-rotating function
- Accumulator for emergency lowering of the arm system
- Pipe-break protection valves for lifting cylinders
- Overload warning device
- Cylinder end-position damping

- Sliding window in cab door

- Ready for electric cooling box

#### Booms:

- Loading boom 32' 2" (C94.5i)
- Loading boom 39' 8" (C94.6i)
- Loading boom 39' 8" (Banana) (C94.6iD)

- Different options for storage, compartment for documents

- Rear view security camera with LCD colour monitor

- Vario cab can be driven 9' 10" high and 8' 2" forwards

#### Sticks:

- Stick 24' 7" (D 94.15i) for (C94.15i)
- Stick 30' 4" (D 94.16i) for (C94.16i / C94.16iD)

#### Cab:

- Air conditioning
- Preparation for radio installation with mute function
- Steering column, height and tilt adjustable
- Seat adjustable separately from console
- Heat-insulating glass, tinted windows
- Operating data display screen

#### Equipment:

- Automatic central lubrication system

#### STANDARD EQUIPMENTG:

##### Engine:

- Automatic idle
- Diesel pre-filter
- Engine monitoring

#### Undercarriage:

- Tool box in the undercarriage

### ADDITIONAL EQUIPMENT

#### Engine:

- Refueling pump
- Engine speed adjustment via potentiometer
- Auxiliary heating
- Cold start assistance

#### Cab:

- Cab protection guard
- Beacon light
- Heated driver's seat
- Radio/CD/MP3, front AUX in, USB
- Cab elevation
- GPS/GSM Telemetriebox, for monitoring of operating data, fuel consumption, location
- Head rest
- Working lights, LED
- Electric cooling box

**Other special equipment:** See price list

#### Hydraulics:

- Hydraulic kit, to operate front and rear supports separately
- Bio oil

### ATTACHMENTS

- Clamshell grab
- Load hook
- Log grab
- Orange peel grab
- Load lifting magnet



## DO THE RIGHT JOB

### FULL STEAM AHEAD

Get your cargo handling moving. In times of rapid growth in the transport sector you need handling equipment with which you can work fast.

#### Particularly good for port use:

- Low costs per tonne thanks to fast and responsive operation and low-maintenance processing.
  - High handling capacity thanks to enormous lifting power.
  - Arm construction specially designed to clear ships' sides.
  - Cab system with Vario cab.
  - Can be supplied with pylon upon request.
- 
- Newly developed banana boom for ship unloading.

### RECYCLING & SCRAP

### PORTS



## STABILITY



- Here the new undercarriage with moving pads and new ascent to get more comfortable in the cabin.
- New outrigger pads for increased stability again.



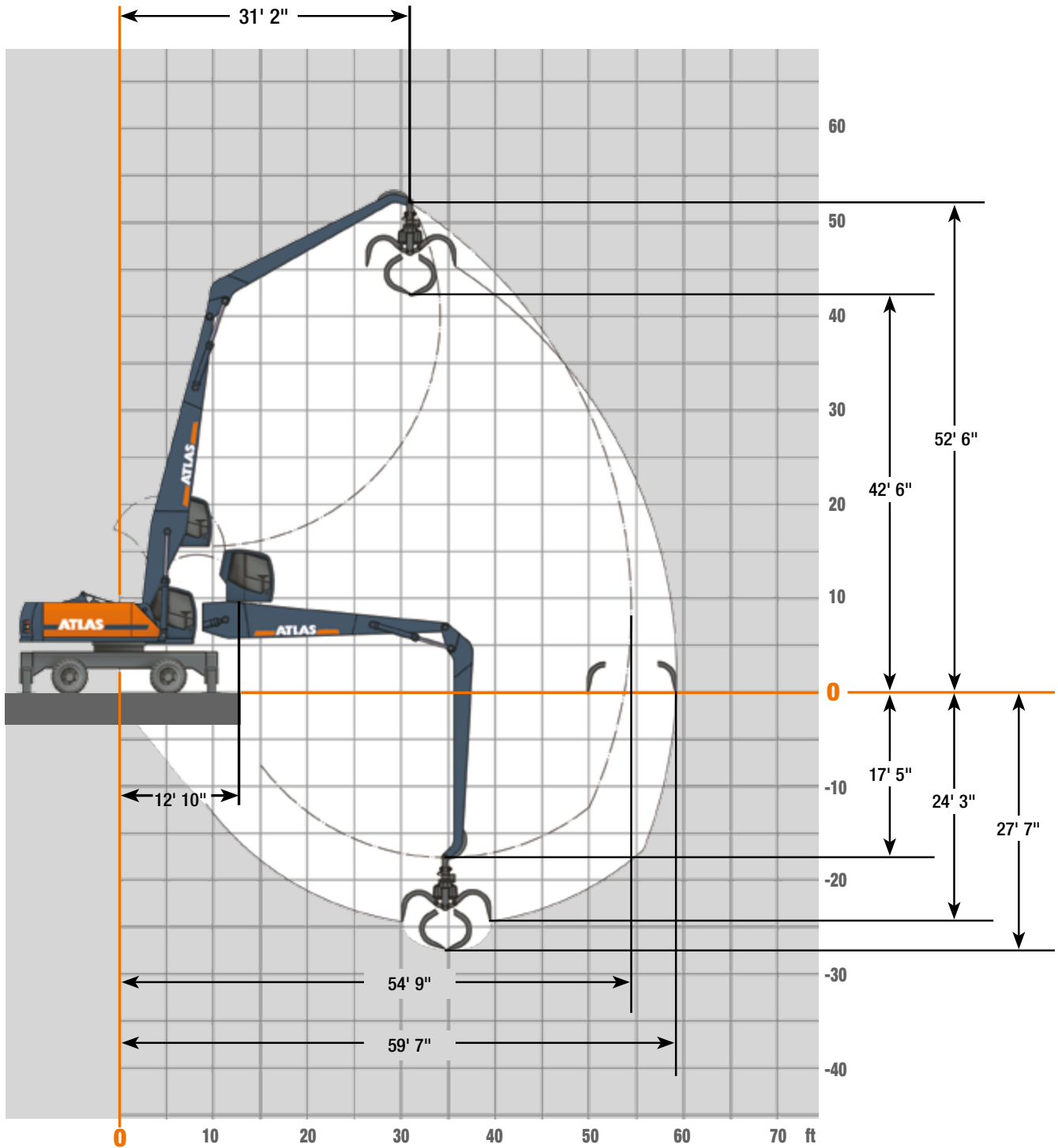
## RELIABLE – BECAUSE EVERY MINUTE COUNTS

Our market leadership is based on our well-proven technology tried and tested a thousand times over in the most arduous applications. High-tensile steels, robust electric and electronic components as well as excellent workmanship in all hydraulic components ensure that the material handler is the reliable heart on any construction site.



# WORKING RANGES 520MH

**Working Ranges** Loading boom 32' 2" (C94.5i) with Stick 24' 7" (D94.15i)




# LIFTING CAPACITIES 520MH

## Lifting Capacities Loading boom 32' 2" (C94.5i) and Stick 24' 7" (D94.15i)

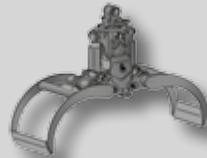
Lifting Capacities Loading boom 32' 2" (C94.5i) with Stick 24' 7" (D 94.15i). Max. reach 54' 9"																
HEIGHT	19' 8"		24' 7"		29' 6"		34' 5"		39' 4"		44' 3"		49' 3"		54' 2"	
	FRONT	LATERAL	FRONT	LATERAL	FRONT	LATERAL	FRONT	LATERAL	FRONT	LATERAL	FRONT	LATERAL	FRONT	LATERAL	FRONT	LATERAL
54' 2"	outriggers down															
	outriggers up															
49' 3"	outriggers down							18,743*	18,743*							
	outriggers up							18,743*	15,215							
44' 3"	outriggers down							18,081*	18,081*	17,199*	17,199*					
	outriggers up							18,081*	15,656	15,435	12,348					
39' 4"	outriggers down							18,081*	18,081*	16,979*	16,979*	16,097*	16,097*			
	outriggers up							18,081*	15,656	15,435	12,348	12,569	9,923			
34' 5"	outriggers down							18,302*	18,302*	17,199*	17,199*	16,097*	16,097*			
	outriggers up							18,302*	15,435	15,435	12,348	12,569	9,923			
29' 6"	outriggers down							18,963*	18,963*	17,640*	17,640*	16,317*	16,317*	15,435*	15,435*	
	outriggers up							18,963	15,215	15,215	12,128	12,348	9,702	10,364	7,938	
24' 7"	outriggers down					22,271*	22,271*	19,845*	20,066*	18,302*	18,302*	16,758*	16,758*	15,656*	15,656*	
	outriggers up					22,271*	18,743	18,522	14,553	14,774	11,687	12,128	9,482	10,143	7,938	
19' 8"	outriggers down			28,004*	28,004*	24,035*	24,035*	21,168*	21,168*	18,963*	18,963*	17,199*	17,199*	15,876*	15,876*	
	outriggers up			28,004*	23,373	22,491	17,640	17,861	13,892	14,333	11,246	11,907	9,261	9,923	7,718	
14' 9"	outriggers down	39,690*	39,690*	31,311*	31,311*	26,019*	26,019*	22,491*	22,491*	19,845*	19,845*	17,861*	17,861*	16,317*	16,317*	
	outriggers up	38,588	29,327	27,783	21,609	21,389	16,538	16,979	13,230	13,892	10,805	11,466	8,820	9,702	7,497	
9' 10"	outriggers down	33,737*	33,737*	34,398*	34,398*	28,004*	28,004*	23,594*	23,594*	20,727*	20,727*	18,302*	18,302*	16,538*	16,538*	14,774*
	outriggers up	33,737*	26,240	25,799	19,845	20,066	15,435	16,317	12,569	13,230	10,364	11,246	8,600	9,482	7,277	8,159
4' 11"	outriggers down	12,128*	12,128*	36,603*	36,603*	29,327*	29,327*	24,696*	24,696*	21,168*	21,168*	18,743*	18,743*	16,538*	16,538*	
	outriggers up	12,128*	12,128*	24,255	18,302	18,963	14,553	15,435	11,907	12,789	9,702	10,805	8,159	9,261	7,056	
0 m	outriggers down	10,364*	10,364*	29,768*	29,768*	30,209*	30,209*	25,137*	25,137*	21,609*	21,609*	18,963*	18,963*	16,538*	16,538*	
	outriggers up	10,364*	10,364*	23,153	17,199	18,302	13,671	14,994	11,246	12,348	9,482	10,584	7,938	9,041	6,836	
-4' 11"	outriggers down	11,466*	11,466*	24,917*	24,917*	30,209*	30,209*	25,358*	25,358*	21,609*	21,609*	18,743*	18,743*	16,317*	16,317*	
	outriggers up	11,466*	11,466*	22,491	16,538	17,640	13,230	14,553	10,805	12,128	9,041	10,364	7,718	9,041	6,615	
-9' 10"	outriggers down	13,671*	13,671*	24,917*	24,917*	29,547*	29,547*	24,696*	24,696*	20,948*	20,948*	18,081*	18,081*	15,435*	15,435*	
	outriggers up	13,671*	13,671*	22,050	16,317	17,420	13,010	14,333	10,584	11,907	9,041	10,364	7,718	9,041	6,615	
-14' 9"	outriggers down					27,783*	27,783*	23,373*	23,373*	19,845*	19,845*	16,758*	16,758*			
	outriggers up					17,420	13,010	14,112	10,584	11,907	8,820	10,364	7,718			
-19' 8"	outriggers down															
	outriggers up															

The specified max. loading capacities in pounds (lbs) include a stability of 25% or are calculated at 87% of the hydraulic lifting power, as per ISO10567. These values are applicable at the tip of the arm with optimum positioning of the corresponding arm system. \* Value limited due to hydraulics. Weights of attached load carrying accessories (grab, magnet, load hook, etc.) are not included with the load carrying values.

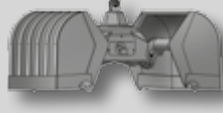
### Attachments




Load hook




Log grab



Clamshell grab



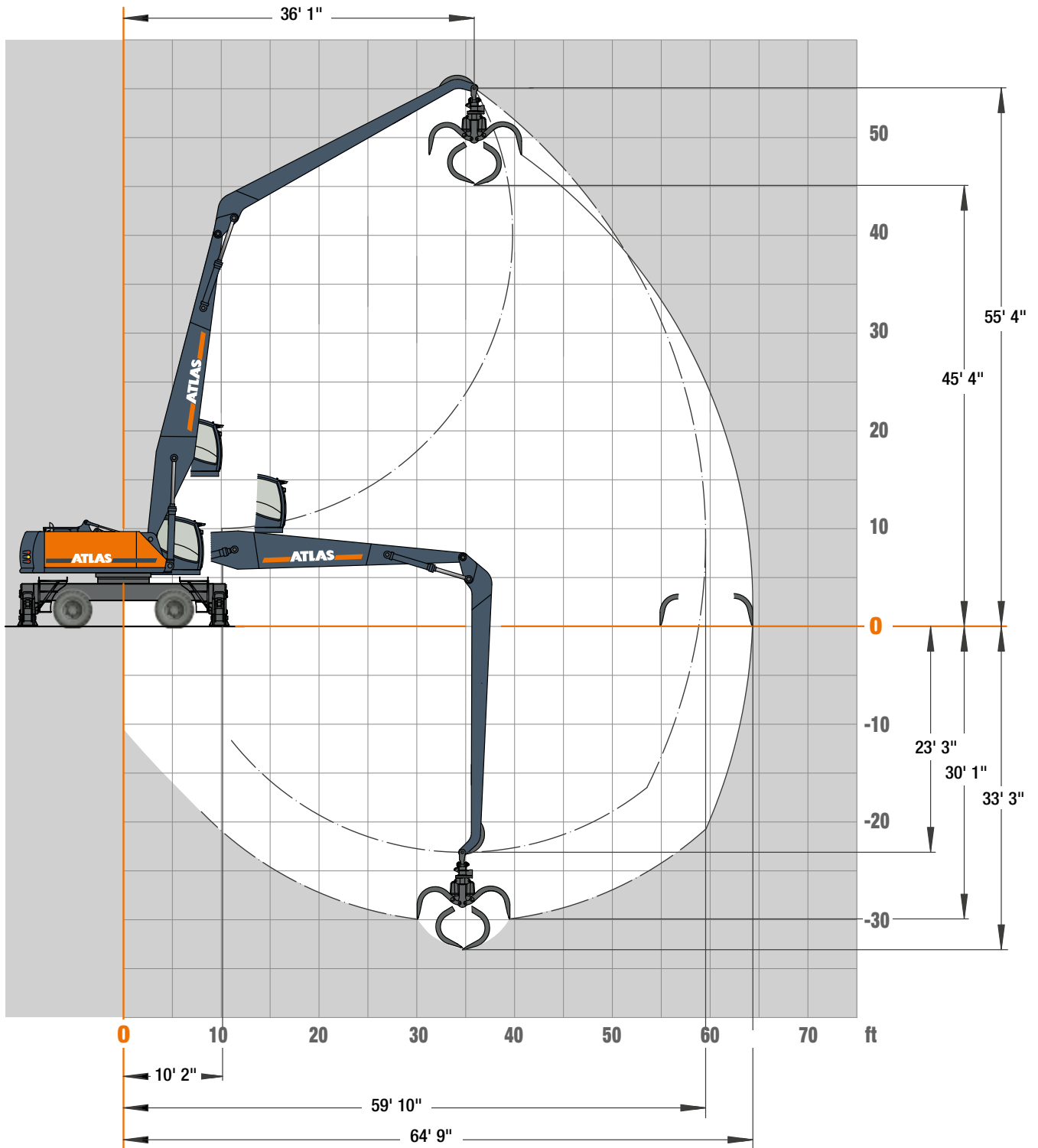
Orange peel grab



Load lifting magnet

# WORKING RANGES 520MH

**Working Ranges** Loading boom 32' 2" (C94.5i) with Stick 30' 4" (D94.16i)





# LIFTING CAPACITIES 520MH

## Lifting Capacities Loading boom 32' 2" (C94.5i) with Stick 30' 4" (D94.16i)

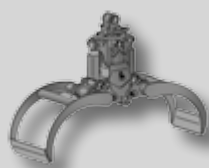
HEIGHT		19' 8"		24' 7"		29' 6"		34' 5"		39' 4"		44' 3"		49' 3"		54' 2"		59' 1"	
		FRONT	LATERAL	FRONT	LATERAL	FRONT	LATERAL	FRONT	LATERAL	FRONT	LATERAL	FRONT	LATERAL	FRONT	LATERAL	FRONT	LATERAL	FRONT	LATERAL
36' 1"	outriggers down											12,877	12,877	12,277	12,277				
33'	outriggers down									13,766	13,766	13,012	13,012	12,341	12,341	11,748	11,748		
29' 6"	outriggers down									14,072	14,072	13,219	13,219	12,465	12,465	11,797	11,797		
26' 3"	outriggers down									14,464	14,464	13,488	13,488	12,637	12,637	11,887	11,887		
22' 12"	outriggers down							16,257	16,257	14,932	14,932	13,810	13,810	12,848	12,848	12,011	12,011		
19' 8"	outriggers down							17,024	17,024	15,459	15,459	14,171	14,171	13,091	13,091	12,154	12,154		
16' 5"	outriggers down					20,223	20,223	17,859	17,859	16,027	16,027	14,559	14,559	13,349	13,349	12,308	12,308		
13' 1"	outriggers down			25,505	25,505	21,543	21,543	18,728	18,728	16,614	16,614	14,958	14,958	13,611	13,611	12,465	12,465	11,415	11,415
9' 1"	outriggers down	35,265	35,265	27,621	27,621	22,857	22,857	19,590	19,590	17,194	17,194	15,351	15,351	13,863	13,863	12,606	12,606	11,455	11,455
6' 7"	outriggers down	38,600	38,600	29,568	29,568	24,085	24,085	20,399	20,399	17,738	17,738	15,712	15,712	14,090	14,090	12,723	12,723	11,460	11,460
3' 3"	outriggers down	27,961	27,961	31,208	31,208	25,152	25,152	21,113	21,113	18,219	18,219	16,025	16,025	14,275	14,275	12,793	12,793		
0	outriggers down	16,091	16,091	32,441	32,441	26,001	26,001	21,693	21,693	18,607	18,607	16,268	16,268	14,398	14,398	12,804	12,804		
-3' 3"	outriggers down	13,234	13,234	33,219	33,219	26,587	26,587	22,103	22,103	18,874	18,874	16,415	16,415	14,438	14,438	12,732	12,732		
-6' 7"	outriggers down	12,650	12,650	30,148	30,148	26,878	26,878	22,317	22,317	18,995	18,995	16,444	16,444	14,370	14,370	12,560	12,560		
-9' 1"	outriggers down	12,985	12,985	26,702	26,702	26,854	26,854	22,302	22,302	18,942	18,942	16,327	16,327	14,178	14,178	12,238	12,238		
-13' 1"	outriggers down	13,783	13,783	25,547	25,547	26,510	26,510	22,046	22,046	18,697	18,697	16,049	16,049	13,814	13,814	11,713	11,713		
-16' 5"	outriggers down	14,852	14,852	25,578	25,578	25,816	25,816	21,515	21,515	18,217	18,217	15,549	15,549	13,225	13,225				

The specified max. loading capacities in pounds (lbs) include a stability of 25% or are calculated at 87% of the hydraulic lifting power, as per ISO10567. These values are applicable at the tip of the arm with optimum positioning of the corresponding arm system. \* Value limited due to hydraulics. Weights of attached load carrying accessories (grab, magnet, load hook, etc.) are not included with the load carrying values.

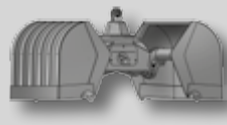
### Attachments



Load hook



Log grab



Clamshell grab



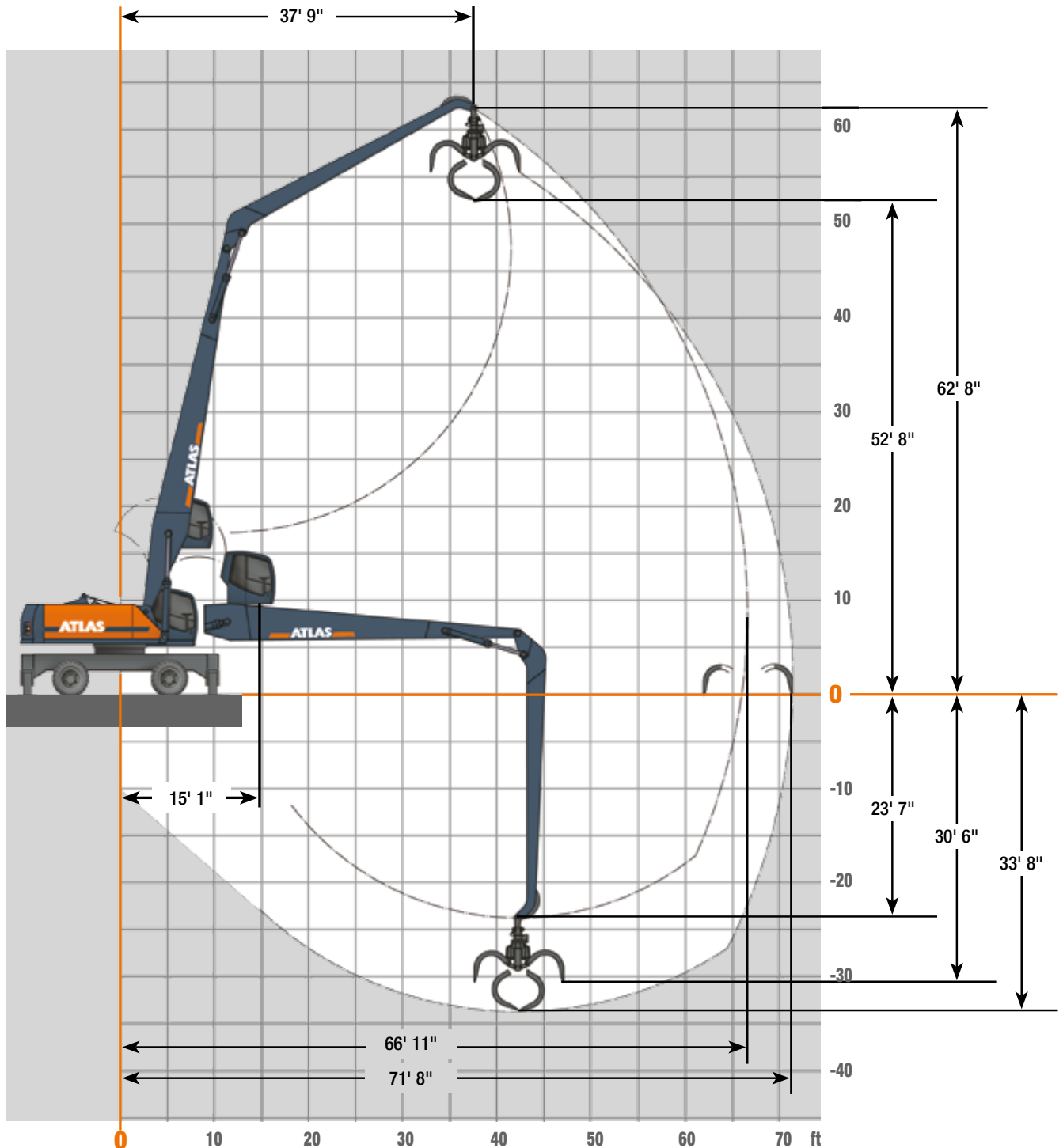
Orange peel grab



Load lifting magnet

# WORKING RANGES 520MH

**Working Ranges** Loading boom 39' 8" (C94.6i) with Stick 30' 4" (D94.16i)




# LIFTING CAPACITIES 520MH

## Lifting Capacities Loading boom 39' 8" (C94.6i) with Stick 30' 4" (D94.16i)

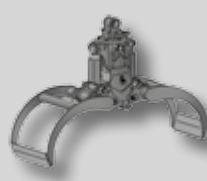
Lifting Capacities Loading boom 39' 8" (C94.6i) with Stick 30' 4" (D 94.16i). Max. reach 71' 8"																					
HEIGHT		19' 8"		24' 7"		29' 6"		34' 5"		39' 4"		44' 3"		49' 3"		54' 2"		59' 1"		64'	
		FRONT	LATERAL	FRONT	LATERAL	FRONT	LATERAL	FRONT	LATERAL	FRONT	LATERAL	FRONT	LATERAL	FRONT	LATERAL	FRONT	LATERAL	FRONT	LATERAL	FRONT	LATERAL
59' 1"	outriggers down																				
	outriggers up																				
54' 2"	outriggers down											12,569*	12,569*								
	outriggers up											12,569*	10,143								
49' 3"	outriggers down											12,569*	12,569*	11,687*	11,687*						
	outriggers up											12,569*	10,143	10,584	8,159						
44' 3"	outriggers down											12,569*	12,569*	11,687*	11,687*	11,025*	11,025*				
	outriggers up											12,569*	10,143	10,584	8,159	8,600	6,395				
39' 4"	outriggers down											12,569*	12,569*	11,687*	11,687*	11,025*	11,025*				
	outriggers up											12,569*	10,143	10,364	8,159	8,600	6,395				
34' 5"	outriggers down									14,112*	14,112*	13,010*	13,010*	11,907*	11,907*	11,246*	11,246*	10,364*	10,364*		
	outriggers up									14,112*	12,348	12,569	9,923	10,364	7,938	8,379	6,395	6,836	5,072		
29' 6"	outriggers down									14,774*	14,774*	13,451*	13,451*	12,348*	12,348*	11,246*	11,246*	10,584*	10,584*		
	outriggers up									14,774*	11,687	12,128	9,482	9,923	7,718	8,159	6,174	6,836	4,851		
24' 7"	outriggers down							17,199*	17,199*	15,435*	15,435*	13,892*	13,892*	12,569*	12,569*	11,466*	11,466*	10,584*	10,584*	9,923*	9,923*
	outriggers up							17,199*	14,112	14,333	11,246	11,687	9,041	9,702	7,277	7,938	5,954	6,615	4,851	5,513	3,749
19' 8"	outriggers down			25,799*	25,799*	21,389*	21,389*	18,302*	18,302*	16,097*	16,097*	14,333*	14,333*	13,010*	13,010*	11,687*	11,687*	10,805*	10,805*	9,923*	9,923*
	outriggers up			25,799*	22,050	21,389*	16,758	16,758	13,010	13,671	10,364	11,025	8,379	9,261	6,836	7,718	5,513	6,395	4,631	5,292	3,749
14' 9"	outriggers down	37,265*	37,265*	28,445*	28,445*	22,932*	22,932*	19,404*	19,404*	16,758*	16,758*	14,774*	14,774*	13,230*	13,230*	12,128*	12,128*	11,025*	11,025*	10,143*	9,923*
	outriggers up	35,280	26,460	25,799	19,404	19,625	14,994	15,656	11,907	12,789	9,702	10,584	7,938	8,820	6,395	7,277	5,292	6,174	4,410	5,292	3,528
9' 10"	outriggers down	4,190*	4,190*	30,650*	30,650*	24,476*	24,476*	20,507*	20,507*	17,420*	17,420*	15,435*	15,435*	13,671*	13,671*	12,348*	12,348*	11,025*	11,025*	10,143*	10,143*
	outriggers up	4,190*	4,190*	22,932	16,979	18,081	13,451	14,553	10,805	11,907	8,820	9,923	7,277	8,379	5,954	7,056	5,072	5,954	4,190	5,072	3,308
4' 11"	outriggers down			12,569*	12,569*	25,578*	25,578*	21,168*	21,168*	18,081*	18,081*	15,876*	15,876*	13,892*	13,892*	12,348*	12,348*	11,246*	11,246*	10,143*	10,143*
	outriggers up			12,569*	12,569*	16,538	11,907	13,451	9,702	11,246	8,159	9,261	6,836	7,938	5,513	6,836	4,631	5,733	3,969	4,851	3,308
0 m	outriggers down			9,041*	9,041*	25,578*	25,578*	21,609*	21,609*	18,522*	18,522*	15,876*	15,876*	14,112*	14,112*	12,569*	12,569*	11,246*	11,246*	9,923*	9,923*
	outriggers up			9,041*	9,041*	15,435	10,805	12,569	9,041	10,584	7,497	8,820	6,174	7,497	5,292	6,395	4,410	5,513	3,749	4,851	3,087
-4' 11"	outriggers down			8,820*	8,820*	19,625*	19,625*	21,830*	21,830*	18,522*	18,522*	16,097*	16,097*	14,112*	14,112*	12,348*	12,348*	11,025*	11,025*	9,702*	9,702*
	outriggers up			8,820*	8,820*	14,553	10,143	11,907	8,379	9,923	7,056	8,379	5,954	7,277	4,851	6,174	4,190	5,292	3,528	4,631	3,087
-9' 10"	outriggers down			9,702*	9,702*	18,302*	18,302*	21,609*	21,609*	18,302*	18,302*	15,876*	15,876*	13,892*	13,892*	12,128*	12,128*	10,584*	10,584*		
	outriggers up			9,702*	9,702*	14,112	9,702	11,466	7,938	9,702	6,615	8,159	5,513	7,056	4,851	6,174	3,969	5,292	3,528		
-14' 9"	outriggers down			11,025*	11,025*	18,522*	18,743*	20,727*	20,727*	17,861*	17,861*	14,774*	15,435*	13,451*	13,451*	11,687*	11,687*	10,143*	10,143*		
	outriggers up			11,025*	11,025*	13,892	9,482	11,246	7,718	9,482	6,395	7,497	5,513	7,056	4,631	5,954	3,969	5,292	3,528		
-19' 8"	outriggers down					19,845*	19,845*	19,625*	19,625*	16,979*	16,979*	14,553*	14,553*	12,569*	12,569*	11,025*	11,025*				
	outriggers up					13,892	9,702	11,246	7,718	9,482	6,395	7,938	5,292	6,836	4,631	5,954	3,969				

The specified max. loading capacities in pounds (lbs) include a stability of 25% or are calculated at 87% of the hydraulic lifting power, as per ISO10567. These values are applicable at the tip of the arm with optimum positioning of the corresponding arm system. \* Value limited due to hydraulics. Weights of attached load carrying accessories (grab, magnet, load hook, etc.) are not included with the load carrying values.

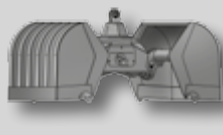
### Attachments



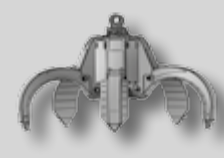
Load hook




Log grab



Clamshell grab



Orange peel grab

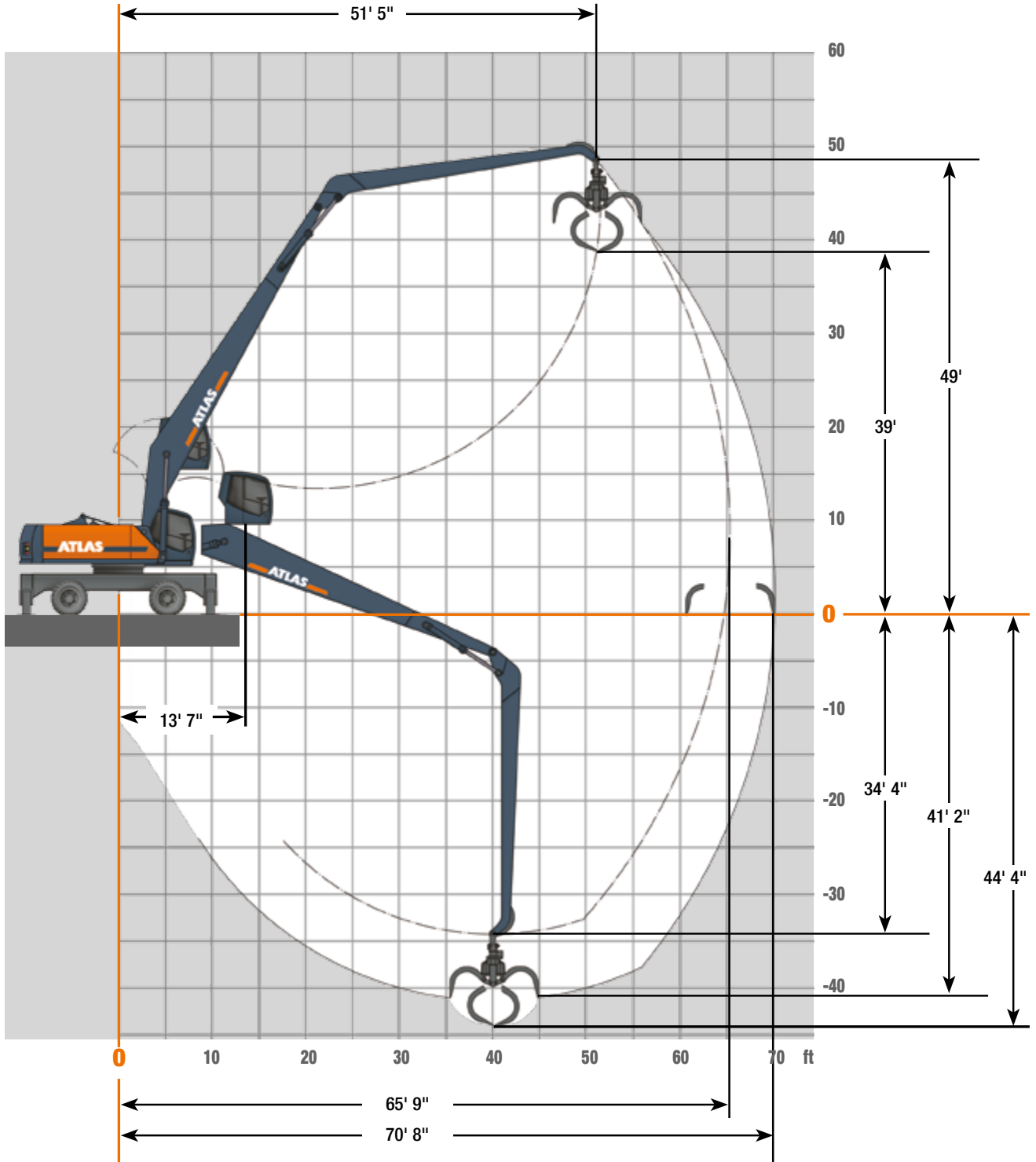


Load lifting magnet



# WORKING RANGES 520MH

**Working Ranges** Loading boom 39' 8" (C94.6iD) with Stick 30' 4" (D94.16i)



# LIFTING CAPACITIES 520MH

## Lifting Capacities Loading boom 39' 8" (C94.6iD) with Stick 30' 4" (D94.16i)

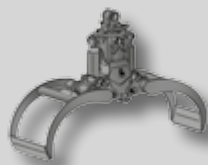
Lifting Capacities Loading boom 39' 8" (C94.6iD) with Stick 30' 4" (D 94.16i). Max. reach 70' 8"																					
HEIGHT		19' 8"		24' 7"		29' 6"		34' 5"		39' 4"		44' 3"		49' 3"		54' 2"		59' 1"		64'	
		FRONT	LATERAL	FRONT	LATERAL	FRONT	LATERAL	FRONT	LATERAL	FRONT	LATERAL	FRONT	LATERAL	FRONT	LATERAL	FRONT	LATERAL	FRONT	LATERAL	FRONT	LATERAL
59' 1"	outriggers down																				
	outriggers up																				
54' 2"	outriggers down																8,379*	8,379*			
	outriggers up																8,379	6,836			
49' 3"	outriggers down																8,379*	8,379*			
	outriggers up																8,379	6,836			
44' 3"	outriggers down																8,600*	8,600*	8,379*	8,379*	
	outriggers up																8,600	6,615	7,277	5,292	
39' 4"	outriggers down																9,261*	9,261*	8,820*	8,820*	8,600*
	outriggers up																9,261*	7,938	8,600	6,395	7,056
34' 5"	outriggers down																9,702*	9,702*	9,261*	9,261*	8,820*
	outriggers up																9,702*	7,718	8,379	6,174	6,836
29' 6"	outriggers down																12,348*	12,348*	11,246*	11,246*	10,364*
	outriggers up																12,348*	11,025	11,246*	8,820	9,482
24' 7"	outriggers down					17,861*	17,861*	15,215*	15,215*	13,230*	13,230*	11,907*	11,907*	10,805*	10,805*	10,143*	10,143*	9,482*	9,482*	8,820*	
	outriggers up					17,861*	15,656	15,215*	12,569	13,230	10,143	11,025	8,379	9,041	6,836	7,718	5,513	6,615	4,851	5,513	3,749
19' 8"	outriggers down	5,292*	5,292*	25,137*	25,137*	20,066*	20,066*	16,758*	16,758*	14,333*	14,333*	12,789*	12,789*	11,466*	11,466*	10,584*	10,584*	9,702*	9,702*	9,041*	
	outriggers up	5,292*	5,292*	23,814	17,640	18,743	14,112	14,994	11,246	12,348	9,261	10,364	7,718	8,600	6,395	7,277	5,292	6,174	4,410	5,292	3,528
14' 9"	outriggers down			13,451*	13,451*	21,830*	21,830*	18,081*	18,081*	15,435*	15,435*	13,451*	13,451*	12,128*	12,128*	11,025*	11,025*	10,143*	10,143*	9,261*	
	outriggers up			13,451*	13,451*	16,979	12,569	13,892	10,143	11,466	8,379	9,702	7,056	8,159	5,954	7,056	4,851	5,954	4,190	5,072	3,308
9' 10"	outriggers down			9,702*	9,702*	23,373*	23,373*	19,184*	19,184*	16,317*	16,317*	14,112*	14,112*	12,569*	12,569*	11,466*	11,466*	10,364*	10,364*	9,482*	
	outriggers up			9,702*	9,702*	15,876	11,246	13,010	9,261	10,805	7,718	9,041	6,615	7,718	5,513	6,615	4,631	5,733	3,749	4,851	3,308
4' 11"	outriggers down			9,261*	9,261*	20,286*	20,286*	20,066*	20,066*	16,979*	16,979*	14,774*	14,774*	13,230*	13,230*	11,687*	11,687*	10,584*	10,584*	9,702*	
	outriggers up			9,261*	9,261*	14,994	10,364	12,348	8,600	10,143	7,277	8,600	6,174	7,497	5,072	6,395	4,410	5,513	3,749	4,851	3,087
0 m	outriggers down			9,923*	9,923*	18,743*	18,743*	20,727*	20,727*	17,640*	17,640*	15,435*	15,215*	13,451*	13,451*	11,907*	11,907*	10,805*	10,805*		
	outriggers up			9,923*	9,923*	14,333	9,923	11,687	8,159	9,923	6,836	8,379	5,733	7,056	4,851	6,174	4,190	5,513	3,749		
- 4' 11"	outriggers down			11,246*	11,246*	18,963*	18,963*	21,168*	21,168*	17,861*	17,861*	15,435*	15,435*	13,671*	13,671*	12,128*	12,128*	11,025*	10,805*		
	outriggers up			11,246*	11,246*	14,112	9,702	11,466	7,938	9,482	6,615	8,159	5,513	7,056	4,631	5,954	3,969	5,292	3,528		
- 9' 10"	outriggers down			12,348*	13,010*	20,066*	20,066*	21,168*	21,168*	18,081*	18,081*	15,656*	15,656*	13,671*	13,671*	12,128*	12,128*				
	outriggers up			12,348*	12,348	13,892	9,482	11,246	7,718	9,482	6,395	7,938	5,292	6,836	4,631	5,954	3,969				
-14' 9"	outriggers down			14,774*	14,774*	21,830*	21,830*	20,948*	20,948*	17,861*	17,861*	15,435*	15,435*	13,451*	13,451*	11,687*	11,687*				
	outriggers up			14,774*	12,569	14,112	9,702	11,246	7,718	9,482	6,395	7,938	5,292	7,056	4,631	5,954	3,969				
-19' 8"	outriggers down					23,814*	23,814*	20,066*	20,066*	17,199*	17,199*	14,774*	14,774*	12,789*	12,789*						
	outriggers up					14,333	9,923	11,466	7,938	9,482	6,615	8,159	5,513	7,056	4,631						

The specified max. loading capacities in pounds (lbs) include a stability of 25% or are calculated at 87% of the hydraulic lifting power, as per ISO10567. These values are applicable at the tip of the arm with optimum positioning of the corresponding arm system. \* Value limited due to hydraulics. Weights of attached load carrying accessories (grab, magnet, load hook, etc.) are not included with the load carrying values.

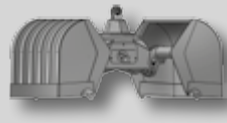
### Attachments



Load hook



Log grab



Clamshell grab



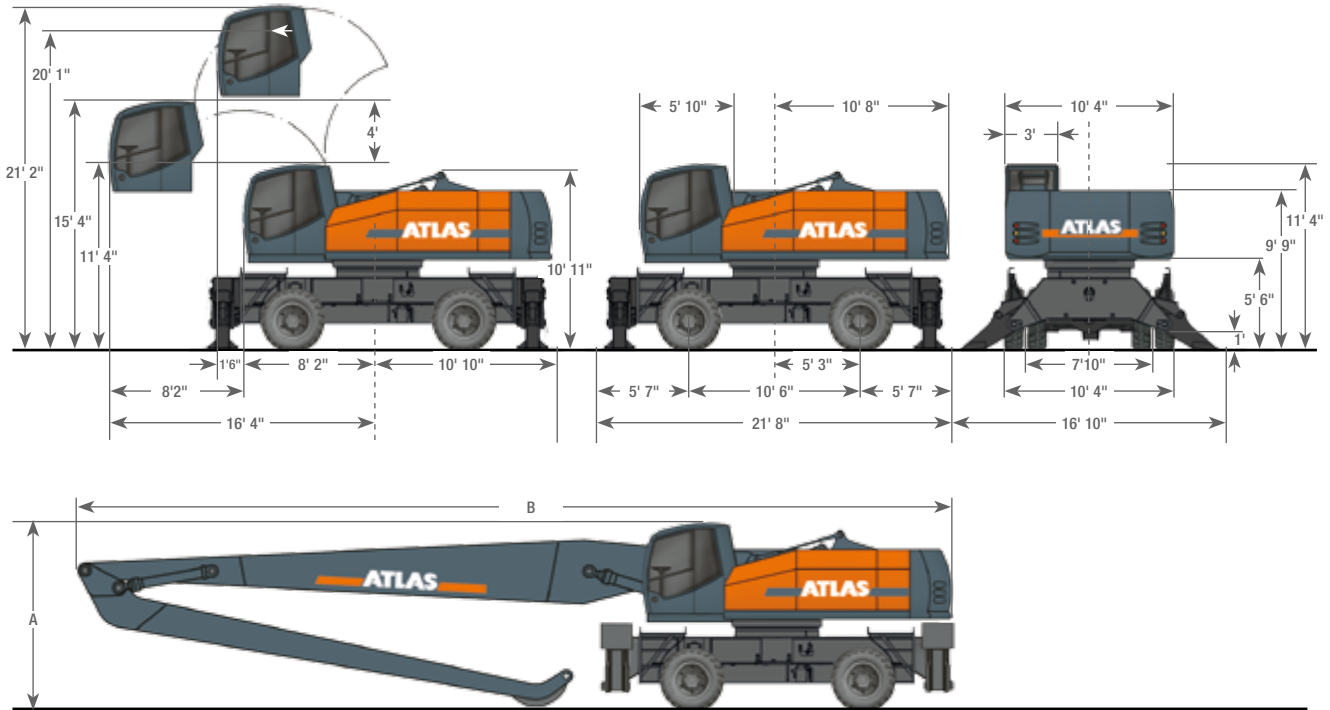
Orange peel grab



Load lifting magnet

# DIMENSION 520MH

## Dimensions



A	TRANSPORT HEIGHT	B	TRANSPORT LENGTH
	Loading boom 32' 2" (C94.5i) with Stick 24' 7" (D94.15i).....11' 4"		Loading boom 32' 2" (C94.5i) with Stick 24' 7" (D94.15i).....46' 3"
	Loading boom 39' 8" (C94.6i) with Stick 30' 4" (D94.16i).....11' 4"		Loading boom 39' 8" (C94.6i) with Stick 30' 4" (D94.16i).....53' 10"
	Loading boom 39' 8" (C94.6id) with Stick 30' 4" (D94.16i).....11' 5"		Loading boom 39' 8" (C94.6id) with Stick 30' 4" (D94.16i).....53' 3"



## GANDERKESEE FACTORY

Atlas GmbH  
Atlasstraße 6  
D-27777 Ganderkesee,  
Germany

Tel.: +49 (0) 4222 954 0  
Fax: +49 (0) 4222 954 220  
E-mail: [info@atlasgmbh.com](mailto:info@atlasgmbh.com)  
[www.atlasgmbh.com](http://www.atlasgmbh.com)



## VECHTA FACTORY

Atlas GmbH  
Theodor-Heuss-Str. 3  
D-49377 Vechta  
Germany

T: +49 (0) 4441 954 0  
F: +49 (0) 4441 954 299  
E-mail: [info@atlasgmbh.com](mailto:info@atlasgmbh.com)  
[www.atlasgmbh.com](http://www.atlasgmbh.com)



## DELMENHORST FACTORY

Atlas GmbH  
Stedinger Straße 324  
D-27751 Delmenhorst  
Germany

T: +49 (0) 4221 49 10  
F: +49 (0) 4221 49 14 43  
E-mail: [info@atlasgmbh.com](mailto:info@atlasgmbh.com)  
[www.atlasgmbh.com](http://www.atlasgmbh.com)

## ATLAS CRANES UK LTD NATIONAL SALES & SERVICE FACILITY

Wharfedale Road,  
Euroway Trading Est.  
Bradford, England BD4 6SL  
United Kingdom

T: +44 8444 99 66 88  
F: +44 1274 65 37 85  
E-mail: [atlasuk@atlasgmbh.com](mailto:atlasuk@atlasgmbh.com)  
[www.atlas-cranes.co.uk](http://www.atlas-cranes.co.uk)  
[www.atlasgmbh.com](http://www.atlasgmbh.com)



**SINCE 1919**  
**ATLAS**



[www.atlasgmbh.com](http://www.atlasgmbh.com)

**ATLAS GmbH**  
EXCAVATORS  
Atlasstraße 6  
D-27777 Ganderkesee, Germany  
T: +49 (0) 4222 954 0  
Fax: +49 (0) 4222 954 220  
[info@atlasgmbh.com](mailto:info@atlasgmbh.com)